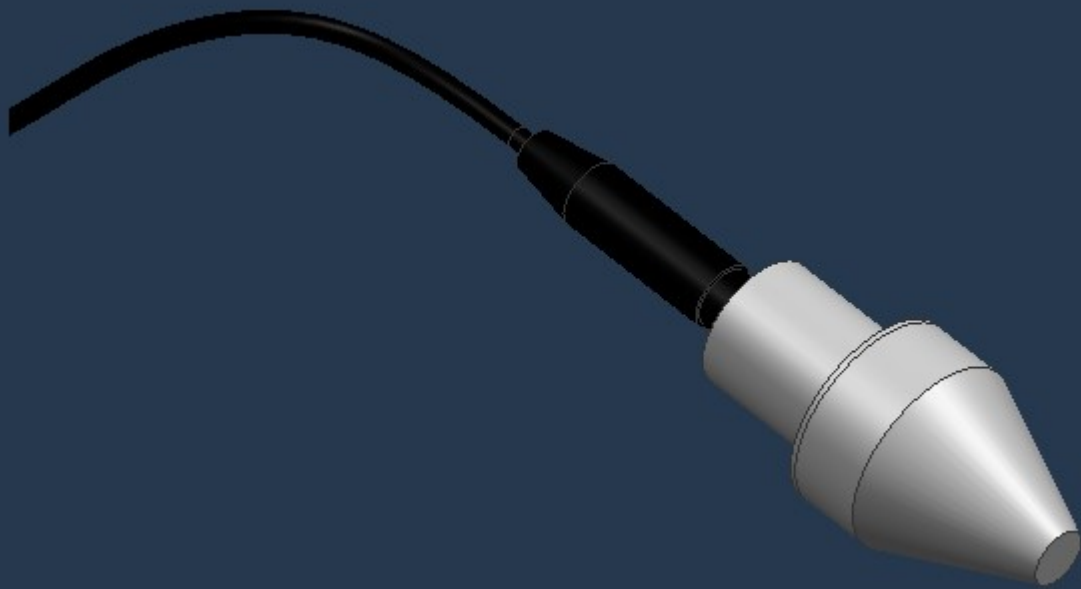
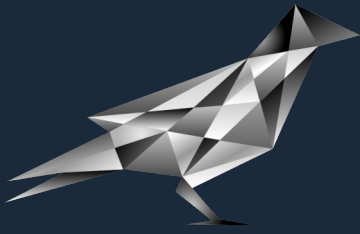


KUZGUN TECH



**Crush Switch**



# KUZGUN TECH

## General Specifications

<b>Mechanical Interface</b>	M12 x 1.25 thread (can be modified according to customer requirements)	
<b>Electrical Interfaces</b>	Connector	2 pin connector (can be modified according to customer requirements)
	Cable	2 core, 24 AWG cable, 1.5 meters (can be modified according to customer requirements)
	Resistance	Switch closed : 0 – 5 Ohm Switch open : > 100 kOhm
	Power Rating	50 mW ±5 mW
	Rated Voltage	28 V ±0.5 V
<b>Target</b>	Soft Target	Soil
	Hard Target	Concrete, Rock, Metal
<b>Impact Conditions</b>	Impact Angle	45° – 90° with respect to target surface
	Impact Speed	200 – 340 m/s
	Angle of Attack	±2.5°
<b>Switch Operating Times</b>	Switching time (time to open circuit)	25 – 100 microseconds
	Time to remain open	min 25 microseconds

KUZGUN TECH

[www.kuzguntech.com](http://www.kuzguntech.com)

[info@kuzguntech.com](mailto:info@kuzguntech.com)