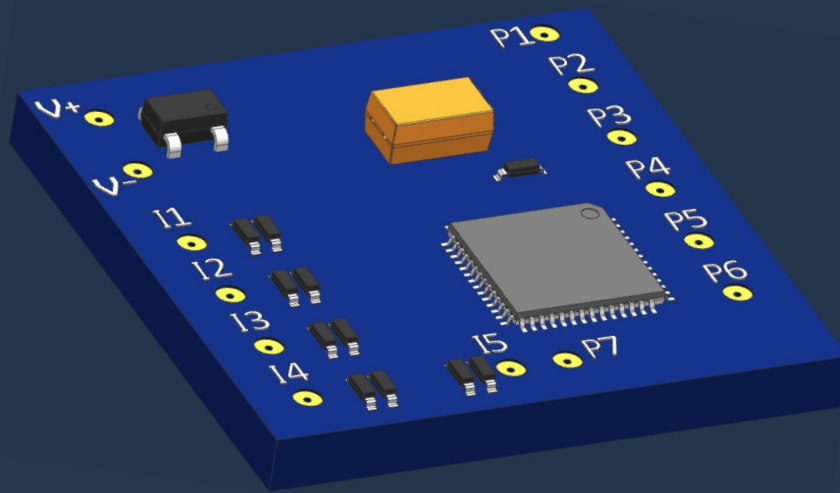
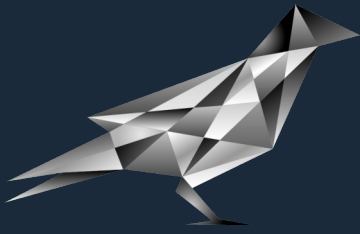


KUZGUN TECH



**SSUDA**

**Shock Survivable Micro Data Logger**



# KUZGUN TECH

## General Specifications

- ◆ Small size (20 mm x 20 mm x 10 mm)
- ◆ Very little power consumption (25 mW @ 5 V)
- ◆ Robust and reliable nonvolatile memory
- ◆ 1300 ms maximum recording time
- ◆ 500 ms operating time with onboard power source
- ◆ 50 ksps sampling rate
- ◆ High shock survivability (>20,000 g) thanks to its small size and special design (component locations, component-PCB connections, etc.)
- ◆ High precision 5 channel 12 bit analog input
- ◆ Advanced, multi-channel digital input
- ◆ Possibility to use multiple SSUDA in the same application (master / slave concept)
- ◆ Straightforward PC connection and user friendly computer interface
- ◆ Can accommodate on-board sensors based on the customer requirements (e.g. acceleration sensor, vibration sensor, etc.)
- ◆ Sampling rate and recording time can be modified based on the customer requirements

KUZGUN TECH

[www.kuzguntech.com](http://www.kuzguntech.com)

[info@kuzguntech.com](mailto:info@kuzguntech.com)